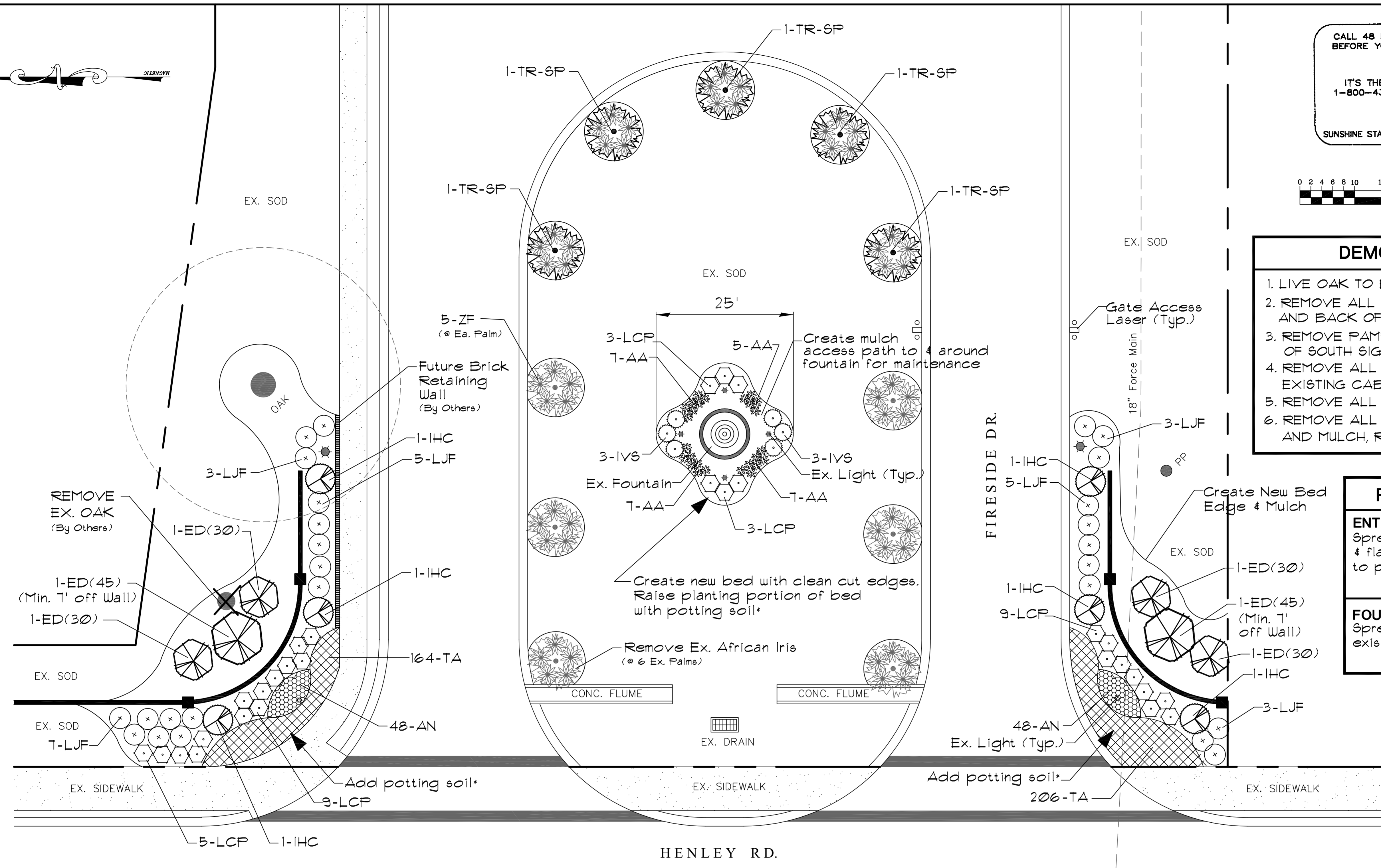


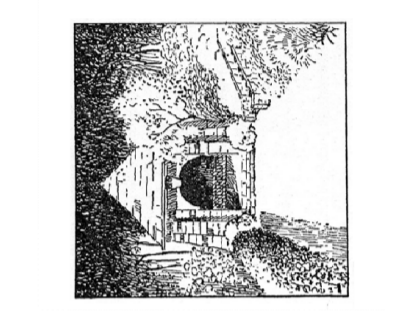
- DEMOLITION NOTES**
1. LIVE OAK TO BE REMOVED BY TREE CO.
  2. REMOVE ALL EXISTING VEGETATION IN FRONT AND BACK OF BOTH ENTRANCE SIGN WALLS.
  3. REMOVE PAMPAS GRASS AT SOUTHERN END OF SOUTH SIGN.
  4. REMOVE ALL AFRICAN IRIS FROM BASE OF EXISTING CABBAGE PALMS.
  5. REMOVE ALL VEGETATION AROUND FOUNTAIN.
  6. REMOVE ALL EXISTING LANDSCAPE TIMBERS AND MULCH, REGRADE LANDSCAPE BEDS.

- POTTING SOIL' CALCS**
- ENTRANCE SIGN BEDS**  
Spread 18' width under Sign Letters & flare down & out to bedline edge. to plant annuals and groundcovers.  
**4 C.Y. EA. SIGN BED**
- FOUNTAIN AREA**  
Spread to fill new bedline shape to existing height & flare to bed edge.  
**10 C.Y.**

- MULCH CALCS**
- INSTALL 3' DEPTH OF GOLD CYPRESS MULCH**  
**34 C.Y. TOTAL**



**LYNDA MONTGOMERY JOHNSON, RLA**  
Florida Registered Landscape Architect #6666701  
POST OFFICE BOX 811  
GREEN COVE SPRINGS, FLORIDA 32043  
PHONE: (904) 502-2385 FAX: (904) 284-6225  
EMAIL: LYNDA.M.JOHNSON@ATT.NET



**VILLAGES OF  
FIRESIDE**  
HENLEY ROAD  
MIDDLEBURG, FL

REVISION NOTES:

1	
2	
3	
4	
5	
6	
7	
8	

DATE: 6.17.2015

**ENTRANCE  
LANDSCAPE**

**L-1**

**LANDSCAPE PLANTING SCHEDULE**

TYPE	KEY	SYMBOL	BOTANICAL/COMMON NAME	QTY.	SIZE	SPACING	TYPE	KEY	SYMBOL	BOTANICAL/COMMON NAME	QTY.	SIZE	SPACING
ANNUALS	AN		Warm Months: May-Oct. Waxed Begonias Cool Months: Nov.-Apr. Fancies	96	4" Pots	@ 12" O.C.	SHRUBS	IVS		Ilex vomitoria (Schellings) (Schellings Holly)	6	7 Gal.	See Plan
GROUND COVERS	AA		Agapanthus africanus (Blue Lily-of-the-Nile)	26	3 Gal.	@ 15" O.C.		LCP		Loropetalum chinensis 'Purple Pixie' (Dwarf Purple Pixie Loropetalum)	29	3 Gal.	@ 36" O.C.
	TA		Trachelospermum asiaticum 'Minima' (Dwarf Minima Asian Jasmine)	370	4" Pots	@ 12" O.C.		LJF		Ligustrum japonica 'Jack Frost' (Jack Frost Ligustrum)	26	7 Gal.	@ 42" O.C.
	ZF		Zamia floridana (Native Florida Coontie)	55	3 Gal.	@ 42" O.C.	PALMS	TR-SP		Transplanted Existing Sabal Palm (Transplanted Cabbage Palm)	5		See Plan
							TREES	IHC		Ilex hybrida 'Conaf' Oakleaf (Oakleaf Holly)	6	15 Gal. Full to Ground	See Plan
								ED		Elaeocarpus decipiens (Japanese Blueberry)	4	30 Gal. Full to Ground	See Plan
											2	45 Gal. Full to Ground	See Plan

NOTES: PLANT MATERIAL SHALL NOT BE SUBSTITUTED WITHOUT APPROVAL OF LANDSCAPE ARCHITECT.  
CONTRACTOR SHALL PROVIDE PURCHASE OF RECEIPT FOR SPECIFIED AMENDMENTS PER SHEET L-2.